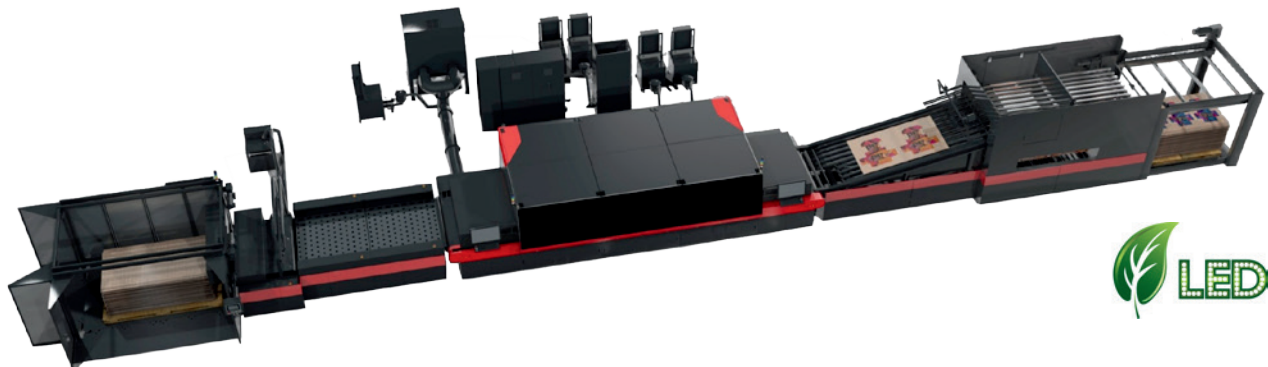




Nozomi C18000
Single-pass, LED Inkjet Technology
for Corrugated Board, Paper Packaging, and Displays

Fast job turns and rapid business growth in a single pass



Supercharge your corrugated, packaging, and merchandise display printing capabilities with single-pass LED digital inkjet technology from EFI™. As run lengths and turnaround times morph, you need a cost-effective response to customer demands for even faster job turns, versioning and variable data, and just-in-time and on-demand printing while reducing inventory costs and waste. Now you can do it all with high-quality, high-speed digital LED printing up to 75 linear meters per minute on substrates up to 1.8 meters wide. Drive continuous operational, environmental, and competitive improvements into your business with the EFI Nozomi C18000.

Let us fuel the production of high-value applications and your operational efficiencies

- Produce cost-effective on-demand and just-in-time jobs, fast-cycle proofs and prototypes, and customized campaigns with direct-to-substrate, production-level digital printing that reduces process steps, time, and costs
- Produce high-quality, full-color graphics without the complexities of other printing processes
- Increase profits by eliminating up-front makeready, plate costs, time, and storage
- Eliminate ink mixing and storage, and the associated labor
- Reduce labor costs and eliminate scrap waste in the litho lamination process by printing direct to substrate
- Accommodate customer's requests for versioned, last-minute and on-the-fly changes, edits, and buying decisions
- Improve color consistency and reduce waste — there is no need to manually mix ink during a run, so your color remains consistent throughout the production process — from proof to final print — and from job to job
- Offer greener LED printing with low VOCs, and less waste and consumables
- Inks meet OCC certification for recyclability and repulpability

Specifications

Printing

- Single-pass, LED, digital drop-on-demand, piezo inkjet technology
- Industrial, fixed array printheads
- Four-level grayscale with resolution up to 360 x 720 dpi
- CMYK, CMYK+W, CMYKOV, CMYKOV+W configurations available
- One- and two-lane printing; two-lane printing supported when coupled with the top feeder to double the sheet throughput
- Multi-image board printing supported in two-lane printing
- In-line primer allows dot gain and ink absorption control over a range of corrugated top sheets

Productivity*

- Up to 75 linear m/min (246 linear ft/m); 7,224 m²/hr (77,758 ft²/hr); 1.8 m x 3 m sheet
- Up to 6,600 sheets/hour (two-up printing, 0.8 m x 1 m sheets); 3,300 sheets/hour (one-up printing, 1.8 m x 1 m sheet)

Media/Handling

- Board/sheet sizes (W x L) from 61 cm x 61 cm (24 in x 24 in) minimum to 1.8 m x 3.0 m (71 in x 118 in) maximum
- Handles paper board thicknesses from 14-point cardstock and corrugated flutes: A, B, C, D, E, F, G, N, O, AB, AC, BC, EB, EF, and triple wall
- Top and bottom feeding options for maximum flexibility
- In-line active monitoring of print dynamics and image diagnostics to optimize print quality in real-time
- 100% in-line, post-print quality inspection for image defects
- Camera system for remote monitoring of complete printing process to optimize print quality in real-time
- Tunable thresholds on quality inspection system permit rejection of failed sheets due to board or print defects
- Automated material stacking to pallet or bundle

Genuine EFI Inks

- LED inks supplied in a variety of volumes, including bulk containers
- Available in cyan, magenta, yellow, black, orange, violet, and white
- Inks meet OCC certification for recyclability and repulpability

Service and support

- Cloud-based remote diagnostics and support to maximize up time
- Optional wireless video broadcast system for continuous monitoring even when you're not standing at the printer

EFI Fiery digital front end

- Fiery® high-performance, bladed architecture
- Enables cost-effective runs of amazing quality
- Integration with third-party workflows, such as Esko and Kodak
- Industry-proven job management, color, imposition, and automation tools for peak operator efficiency

EFI Productivity Suite integration

End-to-end workflow automation with:

- EFI Enterprise Packaging Suite, including Radius MIS/ERP, PrintFlow dynamic scheduling, Auto-Count shop floor production intelligence, and other leading MIS applications
- EFI Corrugated Packaging Suite, including CorrPlan, CorrTrac, and CorrTrim family of corrugated scheduling, trimming and roll stock management solutions, as well as our new Corrugated Business Management System

* Includes allocation for board gap and assumes bottom feeder

** Maximum footprint and power requirements listed; subject to change

Environmental considerations**

CONFIGURATION	FOOTPRINT (L X W X H)	ELECTRICAL	AIR
Four color non-upgradeable with top or bottom feeder, including cleaner/coater/dryer and stacker	34.8 m x 8 m x 3.7 m (114 ft x 26 ft x 12 ft)	620A at 380V or 491A at 480V supply	Clean and dry air, 9 bar (130 psi) minimum at ~2000 l/m (70 cf/m)
Four color upgradeable with top or bottom feeder, including cleaner/coater/dryer and stacker	37.3m x 8m x 3.7m (122 ft x 26 ft x 12 ft)	620A at 380V or 491A at 480V supply	
Six color upgradeable with top or bottom feeder, including cleaner/coater/dryer and stacker	37.3m x 8m x 3.7m (122 ft x 26 ft x 12 ft)	722A at 380V or 572A at 480V supply	

Printer in development; specifications subject to change without notice.

EFI fuels success.

We develop breakthrough technologies for the manufacturing of signage, packaging, textiles, ceramic tiles, and personalized documents, with a wide range of printers, inks, digital front ends, and a comprehensive business and production workflow suite that transforms and streamlines the entire production process, increasing your competitiveness and boosting productivity. Visit www.efi.com or call 650-357-3500 for more information.



Nothing herein should be construed as a warranty in addition to the express warranty statement provided with EFI products and services.

The APPS logo, AutoCal, Auto-Count, Balance, BESTColor, BioVu, BioWare, ColorPASS, Colorproof, ColorWise, Command WorkStation, CopyNet, Cretachrom, Cretaprint, the Cretaprint logo, Cretaprinter, Cretaroller, Digital StoreFront, DirectSmile, DocBuilder, DocBuilder Pro, DockNet, DocStream, DSDesign Studio, Dynamic Wedge, EDOX, EFI, the EFI logo, Electronics For Imaging, Entrac, EPCount, EPPPhoto, EPRegister, EPStatus, Estimate, ExpressPay, FabriVU, Fast-4, Fiery, the Fiery logo, Fiery Driven, the Fiery Driven logo, Fiery JobFlow, Fiery JobMaster, Fiery Link, Fiery Navigator, Fiery Photo, the Fiery Prints logo, Fiery Spark, FreeForm, Hagen, Inktensity, Inkware, Jetrion, the Jetrion logo, LapNet, Logic, Metrix, MicroPress, MiniNet, Monarch, OneFlow, Pace, Pecas, Pecas Vision, PhotoXposure, PressVu, Printcafe, PrinterSite, PrintFlow, PrintMe, the PrintMe logo, PrintSmith, PrintSmith Site, PrintStream, Print to Win, Prograph, PSI, PSI Flexo, Radius, Remoteproof, RIPChips, RIP-While-Print, Screenproof, SendMe, Sincolor, Splash, Spot-On, TrackNet, UltraPress, UltraTex, UltraVu, UV Series 50, VisualCal, VUTEK, the VUTEK logo, and WebTools are trademarks of Electronics For Imaging, Inc. and/or its wholly owned subsidiaries in the U.S. and/or certain other countries.

All other terms and product names may be trademarks or registered trademarks of their respective owners, and are hereby acknowledged.