

**efi** VUTEK® GS<sub>L</sub>xr Pro Roll-to-Roll Series  
Superwide Inkjet Printers



LED roll-to-roll  
printing  
uncompromised.

# The most versatile LED roll-to

Whether you are looking to replace multiple wide-format or older solvent printers, offload capacity to a dedicated roll-fed device, or add high-volume, premium-margin applications to your business, EFI™ has an LED roll-to-roll printing system that's right for your business needs.

## EFI VUTEK® GS3250LXR Pro

High image quality, cool LED curing, and EFI 3M™ SuperFlex Ink make the 3.2-meter EFI VUTEK GS3250LXR Pro printer ideal for the production of vehicle wraps, fleet graphics, and much more.

### At a glance

- Six colors and grayscale native 12 pL printheads with multidrop addressability in each dot position
- Dual resolution of true 600 or 1,000 dpi
- Powerful LED curing technology
- Produce fleet and vehicle graphics at 1,600 ft<sup>2</sup> (149 m<sup>2</sup>) per hour in 600 dpi, grayscale, and light smoothing mode
- High-quality close-viewed output up to 1,200 ft<sup>2</sup> (111 m<sup>2</sup>) per hour in 600 dpi, grayscale, and heavy smoothing mode
- Outdoor distant-viewed output up to 2,250 ft<sup>2</sup> (209 m<sup>2</sup>) per hour
- Your choice of SuperFlex Ink, with a seven-year 3M™ MCS™ Warranty for vehicle graphics, or SuperRange Ink for an even wider range of applications
- Standard multi-queue on-demand functionality for multi-roll printing
- Optional automated double-sided printing capability for banner and backlit applications
- Optional heavy-duty unwinder (HDU) and chiller for enhanced media handling
- Fiery® proServer with Fiery XF Production RIP and color management workflow
- Bidirectional communication capability between the Fiery XF RIP and printer increases workflow efficiencies, job data collection, and enables seamless integration with EFI Web-to-Print and MIS/ERP solutions with native JDF connectivity
- Enhanced Service Program (ESP) warranty for your printer, Fiery proServer hardware, and Fiery XF software



VUTEK GS3250LXR Pro



# -roll printers

## EFI VUTEk GS5250<sub>LXR</sub> Pro / GS5500<sub>LXR</sub> Pro

Designed without compromise, LED VUTEk GS 5-meter roll-to-roll printers offer the perfect combination of innovative technology and extraordinary performance to accelerate your success well into the future.

### At a glance

- Eight colors plus optional white ink printing
- Resolutions of true 600 dpi or 1,000 dpi
- VUTEk GS5250<sub>LXR</sub> Pro features grayscale 12 pL technology
- VUTEk GS5500<sub>LXR</sub> Pro features grayscale 7 pL UltraDrop™ Technology
- Powerful LED curing technology
- Your choice of SuperFlex Ink, with a seven-year 3M™ MCS™ Warranty for vehicle graphics, or SuperRange Ink for an even wider range of applications
- Outdoor distant viewed output up to 2,800 ft<sup>2</sup> (260 m<sup>2</sup>) per hour
- High-quality POP output up to 950 ft<sup>2</sup> (88 m<sup>2</sup>) per hour
- Single-pass multilayer printing
- Standard multi-queue on-demand functionality for multi-roll printing
- Optional automated double-sided printing capability for banner and backlit applications
- Fiery proServer with Fiery XF production RIP and color management workflow
- Bidirectional communication capability between the Fiery XF RIP and printer increases workflow efficiencies, job data collection, and enables seamless integration with EFI Web-to-Print and MIS/ERP solutions with native JDF connectivity
- Enhanced Service Program (ESP) warranty for your printer, Fiery proServer hardware, and Fiery XF software

VUTEk GS5500<sub>LXR</sub> Pro with UltraDrop Technology



VUTEk GS5250<sub>LXR</sub> Pro



## The power of green LED technology

Brilliantly designed “cool cure” LED technology empowers you with the ability to do more for less. Increase your profit opportunity by offering more premium-margin jobs while reducing operating costs and your environmental footprint:

- Extends your range of supported substrates, including lower cost and added-value specialty media
- Increases uptime and productivity with instant on/off and less maintenance
- Drives down operating costs with up to 82% less energy consumption, according to a Fogra study<sup>1</sup>, and fewer consumable parts
- Reduces waste with consistent color output and simple operation
- Satisfies customer requests for a greener print solution with low VOCs, lower power consumption, and less waste and consumables

<sup>1</sup> EFI's VUTEk LED printers show energy reductions of up to 82% when compared to devices with conventional mercury arc lamps. Calculations from Fogra's Energy Efficiency Project, "Energy efficiency of large and small format printing systems."



## The ultimate printing innovation — UltraDrop Technology from EFI

Demanding customers want ultra quality, ultra crispness, and ultra capabilities. That's why EFI's UltraDrop Technology offers smaller drop sizes and more precise control. The results are ultra impressive:

- Native 7 pL printheads with true multidrop addressability in each dot position
- High apparent resolution and high-definition print quality achieved with four-level grayscale and two ink density levels
- Outstanding smoothness in shadows, gradients, and transitions
- Superb text quality down to four-point text including knockout, with fewer satellites and more clarity in all print modes







## Ink performance that's as impressive as it is flexible

EFI 3M™ SuperFlex Ink not only offers an extended color gamut and ensures maximum reliability and performance with your VUTEk system, but also delivers super flexibility for fleet and vehicle graphics, textiles, outdoor applications, and more.

- Exhibits solvent-like elongation characteristics and withstands heat installation without cracking
- Ideal for outdoor applications, vehicle wraps, and graphic applications on textured surfaces, as well as for volume producers of short-term fabric and textile applications
- Offers industry-leading 3M™ MCS™ Warranty, and a seven-year 3M™ MCS™ Warranty for vehicle graphics, when printing with co-branded EFI and 3M UV inks on 3M flexible media<sup>2</sup>
- Available in six-color and eight-color plus white configurations (for 3.2- and 5-meter models, respectively)

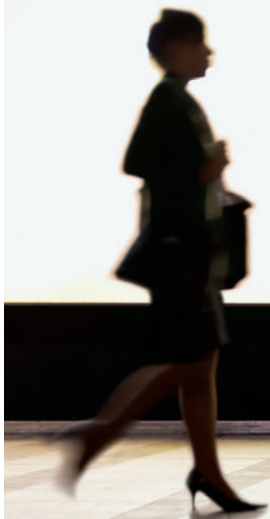
## Ink for a super range of applications

Engineered to ensure maximum reliability with your inkjet system, EFI 3M™ SuperRange Ink offers a hard surface cure, a wide color gamut, and excellent adhesion properties, making it the ideal choice for a super wide range of materials and printing applications.

- Hardened surface cure for increased durability and reliability make it an excellent choice when printing double-sided graphics, billboards, bus shelters, banners, window films, POP, wall coverings, and more
- Offers industry-leading 3M™ MCS™ Warranty when printing with co-branded EFI and 3M UV inks on 3M flexible media<sup>2</sup>
- Available in six-color and eight-color plus white configurations (for 3.2- and 5-meter models, respectively)



<sup>2</sup> The 3M™ MCS™ Warranty backs graphics printed with 3M co-branded ink and select 3M flexible media, printed and applied according to 3M product and instruction bulletins. See [www.3Mgraphics.com/warranties](http://www.3Mgraphics.com/warranties) to register and for more details.



# VUTEk GS3250<sub>LXR</sub> Pro technical data

## Features and benefits

- Dual resolution of true 600 dpi (24 pL) or 1,000 dpi (12 pL)
- Six colors and grayscale
- Standard multi-queue functionality
- Optional automated double-sided printing capability
- Optional heavy duty unwinder (HDU) and chiller for enhanced media handling

## Media/Handling

- Handles flexible substrates up to 126.5 in (3.2 m) wide and .031 – .125 in (.79 – 3.2 mm) thick
- Multiple-roll capability – up to two rolls 60 in (152 cm) wide
- Maximum media weight: 400 lbs (180 kg)
- Maximum roll diameter: 14 in (30 cm)

## Productivity

Resolution	Carriage speed	Color mode	SqFt (SqM) / Hr		
			HEAVY	SMOOTHING LIGHT	NONE
1000x720	MAXIMUM	Fast-6	525 (49)	675 (63)	1000 (93)
	STANDARD		375 (35)	500 (46)	725 (67)
600x360	MAXIMUM	Fast-6	1200 (111)	1600 (149)	2250 (209)
	STANDARD		825 (77)	1100 (102)	1625 (151)

Full width roll used to calculate output productivity.

600x360 print speeds apply to both binary and grayscale print modes.

## Environmental considerations

- Compressed air: 95 – 150 psi maximum at 4 cf/m – dry air only (not included)
- Fully enclosed design for operator safety and environmental considerations
- Temperature: 68° F to 80° F (20° C to 30° C)
- Humidity: 30% to 80% (noncondensing)
- Machine weight: 6,700 lbs (3039 kg)
- Height: 69 in (175 cm)
- Width: 232 in (589 cm)
- Depth: 66 in (168 cm)
- Electrical: 50 – 60 hz 3-Phase, 70 amps, 208 or 440 – 480 AC

## Genuine EFI Inks

- Supplied in 5-liter containers in cyan, magenta, yellow, black, light cyan, and light magenta
- Both EFI ink sets are water- and fade-resistant, contain virtually no volatile organic compounds (VOCs), are media independent and fast-drying, and reduce production time
- Fifteen-month shelf life

## EFI Fiery proServer

- Optimized for use with the EFI Fiery proServer
- Bidirectional communication capability between the Fiery XF RIP and printer allows back communication of audit information on every print job
- Powerful production tools such as nesting, step and repeat, scaling, cropping, and tiling
- Advanced ICC color management for reliable color, quality output, and proofing-quality color

## Enhanced Service Program (ESP)

- EFI's industry-leading service and support program for your printer, Fiery proServer hardware, and Fiery XF software
- Thirteen months of Essential coverage, with 24-business hour (three-business day) response
- Eligible for upgrade to:
  - Critical: providing 8-business hour (one-business day) response
  - Proactive: providing 16-business hour (two-business day) response



# VUTEk GS5250<sub>LXT</sub> Pro / GS5500<sub>LXT</sub> Pro technical data

## Media/Handling

- Handles flexible substrates, heavy textiles, and mesh up to 204 in (5.18 m) wide and .031 – .125 in (.79 – 3.2 mm) thick
- Image width 204 in (5.18 m) full bleed printing
- Multiple-roll capability – up to three 60-in-wide (152 cm) rolls
- Maximum media weight: 880 lbs (399 kg) full width
- Maximum roll diameter: 14 in (35 cm)
- Heavy-duty unwinder (HDU) and optional chiller for enhanced media handling

## Productivity

Resolution	Carriage speed	Color mode	SqFt (SqM) / Hr		
			HEAVY	SMOOTHING LIGHT	NONE
1000x720	MAXIMUM	8 Color	300 (28)	400 (37)	600 (56)
		Fast-4™	600 (56)	800 (74)	1200 (111)
	STANDARD	8 Color	225 (21)	300 (28)	425 (40)
		Fast-4™	425 (40)	575 (53)	850 (80)
600x360	MAXIMUM	8 Color	700 (65)	950 (88)	1400 (130)
		Fast-4™	1400 (130)	1900 (177)	2800 (260)
	STANDARD	8 Color	500 (46)	650 (60)	950 (88)
		Fast-4™	950 (88)	1275 (118)	1900 (176)

Full width roll used to calculate output productivity.

600x360 print speeds apply to both binary and grayscale print modes.

## Environmental considerations

- Compressed air: 95 psi (6.5 bar) minimum, 150 psi (10.5 bar) maximum, at 4 cf/m (113 lpm) – dry air only (not included)
- Fully enclosed design for operator safety and environmental considerations
- Temperature: 68° F to 80° F (20° C to 30° C)
- Humidity: 30% to 80% (noncondensing)
- Machine weight: 12,815 lbs (5,813 kg)
- Height: 75.10 in (190.75 cm)
- Width: 342.35 in (869.59 cm)
- Depth: 98.56 in (250.34 cm)
- Balanced electrical: 3-Phase, 5060 Hz, 70 amps (4 or 5 wire), delta 220 ± 10%, 50A (Wye 400 ± 10%, 50A)

## Genuine EFI Inks

- Supplied in 5-liter containers in cyan, magenta, yellow, black, light cyan, light magenta, light yellow, light black, and white
- Both EFI ink sets are water- and fade-resistant, contain virtually no volatile organic compounds (VOCs), are media independent and fast-drying, and reduce production time

## EFI Fiery proServer

- Optimized for use with the EFI Fiery proServer
- Bidirectional communication capability between the Fiery XF RIP and printer allows back communication of audit information on every print job
- Powerful production tools such as nesting, step and repeat, scaling, cropping, and tiling
- Advanced ICC color management for reliable color, quality output, and proofing-quality color

## Enhanced Service Program (ESP)

- EFI's industry-leading service and support program for your printer, Fiery proServer hardware, and Fiery XF software
- Thirteen months of Essential coverage, with 24-business hour (three-business day) response
- Eligible for upgrade to:
  - Critical: providing 8-business hour (one-business day) response
  - ProActive: providing 16-business hour (two-business day) response

# EFI fuels success.

From Fiery to superwide inkjet, from the lowest cost per label to the most automated business processes, EFI has everything your company needs to succeed. Visit [www.efi.com](http://www.efi.com) or call 650-357-3500 for more information.



Nothing herein should be construed as a warranty in addition to the express warranty statement provided with EFI products and services.

The APPS logo, AutoCal, Auto-Count, Balance, Best, the Best logo, BESTColor, BioVu, BioWare, ColorPASS, Colorproof, ColorWise, Command WorkStation, CopyNet, Cretachrom, Cretaprint, the Cretaprint logo, Cretaprinter, Cretaroller, DockNet, Digital StoreFront, DocBuilder, DocBuilder Pro, DocStream, DSFdesign Studio, Dynamic Wedge, EDOX, EFI, the EFI logo, Electronics For Imaging, Entrac, EPCount, EPPhoto, EPRRegister, EPStatus, Estimate, ExpressPay, Fabrivu, Fast-4, Fiery, the Fiery logo, Fiery Driven, the Fiery Driven logo, Fiery JobFlow, Fiery JobMaster, Fiery Link, Fiery Prints, the Fiery Prints logo, Fiery Spark, FreeForm, Hagen, Inkintensity, Inkware, Jetrion, the Jetrion logo, LapNet, Logic, MiniNet, Monarch, MicroPress, OneFlow, Pace, PhotoXposure, Printcafe, PressVu, PrinterSite, PrintFlow, PrintMe, the PrintMe logo, PrintSmith, PrintSmith Site, Printstream, Print to Win, Prograph, PSI, PSI Flexo, Radius, Rastek, the Rastek logo, Remoteproof, RIPChips, RIP-While-Print, Screenproof, SendMe, Sincrolor, Splash, Spot-On, TrackNet, UltraPress, UltraTex, UltraVu, UV Series 50, VisualCal, VUTEK, the VUTEK logo, and WebTools are trademarks of Electronics For Imaging, Inc. and/or its wholly owned subsidiaries in the US and/or certain other countries. 3M and MCS are trademarks of 3M Company. All other terms and product names may be trademarks or registered trademarks of their respective owners, and are hereby acknowledged.